

Brillantmont

International School Lausanne



Travelling to school –
information for students and families



PRE-DEPARTURE

We are very much looking forward to the new School Year 25-26 and to welcoming your child into the Brillantmont family. We are very excited to begin a new journey of learning and discovery together.

Please pay particular attention to the School Calendar. We thank you in advance for respecting the term dates. We do not approve absences outside the official school calendar for any reason.

Please note that the calendar may change due to external factors such as examination dates. If a change is made, we will notify you, however, we recommend that you always refer to the most recent version which can be found on the school website (the calendar may have changed since you last looked).

With this document, we are sending again the Dress Code, Boarding Handbook and School Calendar. Please ensure you read them again.

Below you will find information about your arrival at school. Bon voyage!

**ALL BOARDING STUDENTS, RETURNING AND NEW,
MUST ARRIVE AT BRILLANTMONT
ON WEDNESDAY 3RD SEPTEMBER 2025**

**ALL ARRIVALS SHOULD BE TO GENEVA
INTERNATIONAL AIRPORT ONLY**

THE FIRST FEW DAYS

When should my child come to Brillantmont?

All students should arrive on Wednesday 3rd September 2025.

Which airport should my child fly to?

All students should fly to Geneva International Airport only.

My child will fly; for what time should we plan the flight?

We prefer if possible that students arrive between 9h00-15h00 where possible.

How will my child get from Geneva airport to school?

A little nearer the time, BUT NOT LATER THAN Monday 25th August, please send your travel details to boarding@brillantmont.ch so that we can organise a transfer if required from Geneva airport. The transfer is only for unaccompanied students and is included in the school fees if on the official arrival day (please refer to the school calendar).

We will bring our child to school. What time should we arrive at school?

Parents who accompany their child usually make their own arrangements. Do not hesitate to ask us for advice about trains, taxis etc. We kindly ask all parents to come to school between 9h00-15h00.

Can a parent / family member accompany my child?

We are delighted to welcome a maximum of two family members accompanying a child. Younger siblings are of course welcome.

During the arrival meeting, you will be welcomed by key members of the Brillantmont team including the Senior Leadership Team, the accountant, the Executive Assistant, the School Nurse, the Head of Pastoral Care and the Head of Boarding. We are all here to make the transition of your child smooth and happy.

Will our family members be able to see the bedrooms?

Yes, you will be able to accompany your child to the bedroom on the arrival day once, to take the suitcases and help with the unpacking. However, once your child has unpacked, parents are kindly asked to not enter the boarding floors, unless specifically authorised by a member of staff. After 16h00, no parents will be allowed to go to the boarding rooms and at all times, we kindly ask that families respect the privacy of the other students who are settling in and arriving.

What will my child do on Wednesday 3rd September?

Once you have met key staff at school, the boarding teacher will show students to their rooms. The student can start to unpack and to settle in with their room-mate. Various “getting to know you” activities will be organised on that first day. Over the weekend, activities and excursions will take place to discover the local area and to help build connections with staff and students.

Is there a Welcome Reception on Wednesday 3rd September?

Yes! We are looking forward to welcoming all parents /accompanying adults to the Welcome Reception, which will be held at 17h00. We will share information about the school year and the different activities taking place. We will also share our expectations with regards to the relationship of mutual trust and respect between the school and the families. After the

reception, an aperitif will be held, which is a great moment to get to meet other parents and our staff.

Please note that the Welcome Reception is only for the adult accompanying the student (parents, agent, family member etc.) only. The students do not attend the Welcome Reception as they will already be integrating with other students.

Can I see my child again during the first few days /weekend once I have dropped him / her off?

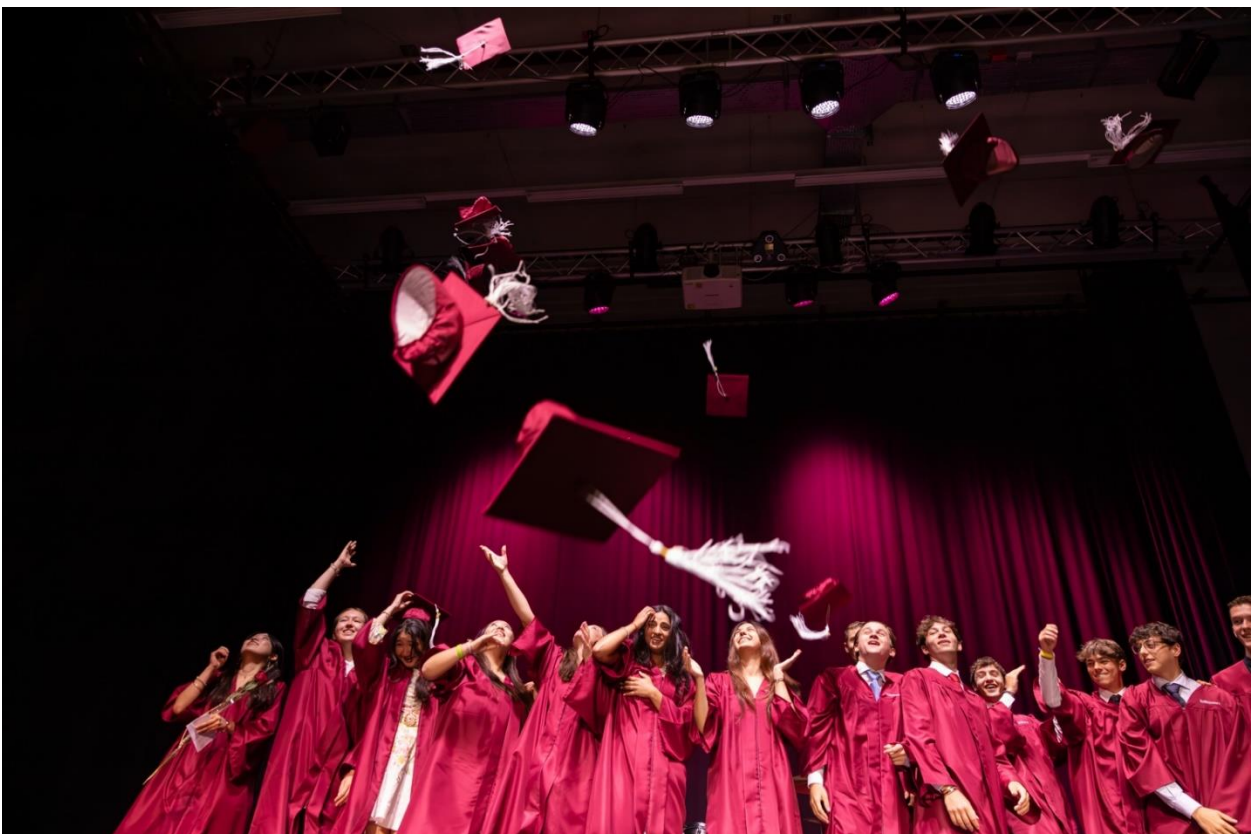
Yes of course! However, since we have activities and excursions organised over the weekend, we prefer that parents who are still in Lausanne say a last goodbye to their child at the end of the day or at a time when the students are not out and about. We can fix a suitable time for all once the excursion programme is finalised (weather dependent) and this should be coordinated with the Head of Boarding. Please also read the note below.

I plan to stay around in Lausanne for the first few days. Is this a good idea?

Respectfully, no! If a parent stays in Lausanne at the beginning of the school year, it can make it very difficult for the child to adapt. At the beginning of the boarding school experience, we ask parents to trust our long experience and to understand that frequent contacts and visits to school can prevent the student from fully integrating into their new environment. Excursions, school induction and getting-to-know-you activities are organised to assist students in settling in. We have a fantastic team, fully committed to your child's well-being and integration. We know that it is not easy to leave your child behind but please trust us. If you are planning to spend time with your child to discover the surroundings, please plan ahead to do so before September 3rd.

When will classes start?

On Thursday 4th September, there is an Induction day for all students, boarding and day. Academic classes commence on Friday 5th September.



WHAT TO BRING WITH YOU

Switzerland is an Alpine country with four clearly defined seasons. In winter, the temperatures may go down to zero or below zero in Lausanne and sometimes it will snow in the city. In summer and early autumn, the temperatures often reach 25 degrees or higher and we can swim in the lake.

In winter, the school frequently goes to the mountains for skiing or other activities. There will be lots of snow and often very cold temperatures, so it is important to be appropriately dressed. We recommend that you bring ski clothes with you since buying them in Switzerland can be very expensive.

Our Dress Code explains what you should bring with you and what you are expected to wear during the academic day.

For your classes, please bring:

- a well-stocked pencil case (pens, paper, ruler, correction fluid etc.)
- a medium sized, paper translation dictionary from English-your mother tongue.
*Electronic dictionaries are not permitted in exams. The dictionary should not be too small (not "Pocket Sized").
- computer or ipad with a keyboard (any brand is possible)
- ruler, protractor, scientific calculator and compass for Maths / Science classes

Provided by the school:

- bath and hand towel (please bring a beach towel)
- washing and ironing facilities
- bed linen (you may bring your own duvet cover if you prefer)
- hairdryers
- file and paper for your classes

Please ensure that your name is written clearly on all your personal possessions and your clothes.

CHECKLIST: HAVE YOU

Informed the school of your flight / travel details?

If not, please send the information to boarding@brillantmont.ch before Monday 25th August.

Asked the school for a transfer?

If you require one, please send all the relevant information to boarding@brillantmont.ch before Monday 25th August.

Do you have a question or is there something you are not sure about?

We are here to help you, so please send your question to boarding@brillantmont.ch

We're looking forward to seeing you soon and having an exciting school year together!
The Brilliantmont team